

01 SITE PLAN
SCALE: 1:500

ARCHITECT:
CALDERFLOWER
architecture
CALDER FLOWER ARCHITECTS PTY LTD • ABN 66 001 900 278 • NOMINATED ARCHITECT: L CALDER 6955
Level 2 - 140 Myrtle St Chippendale NSW 2008 • T (02) 9698 9822 • www.calderflower.com.au

CLIENT:
fresh hope care
FRESH HOPE CARE

RESPONSE TO COUNCIL RFI'S
icon
project management
Icon Project Management
10/350 KENT STREET SYDNEY NSW 2000

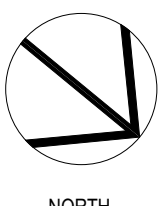
DRIVEWAY RELOCATED	01	4/9/20
DRAWING REVISIONS	REV	DATE

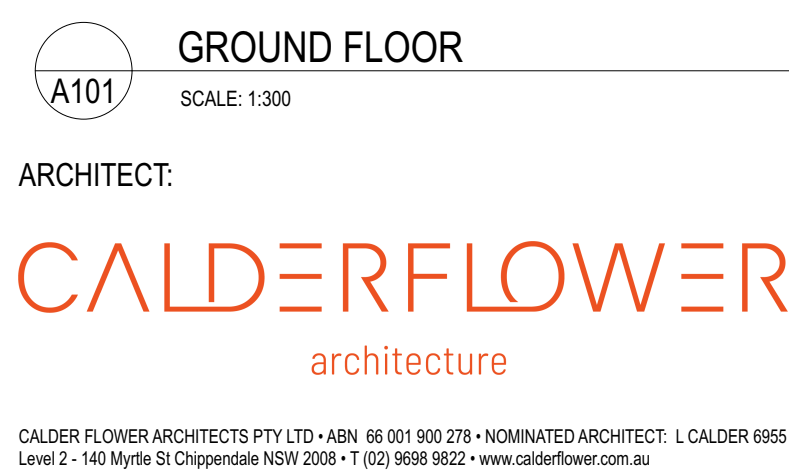
4/9/20	RESPONSE TO COUNCIL RFI'S	B	CFA	LC
16/8/20	ISSUE FOR DEVELOPMENT APPLICATION	A	PJ	LC
DATE	DESCRIPTION	ISSUE	DRAWN	APPD

GENERAL NOTES:
• DO NOT SCALE FROM DRAWINGS. USE FIGURED DIMENSIONS ONLY.
• ANY DISCREPANCIES IN DOCUMENTATION-CONTACT THE ARCHITECT FOR CLARIFICATION.
• CALDER FLOWER ARCHITECTS ARE NOT LIABLE FOR ANY LOSS-DAMAGE-CLAIM-COST DEMAND AS A RESULT OF THE USE OR RECEIPT OF DRAWINGS ISSUED IN DWG FORMAT.
• THIS DRAWING IS NOT AN APPROVED CC DRAWING.
• PRIOR TO USE FOR BUILDING CONSTRUCTION THE BUILDER MUST ENSURE THEY ARE IN POSSESSION OF A CC AND ALL OTHER REQUIRED COUNCIL APPROVALS

PROJECT:
FHC MAITLAND
7 Martin Close & 42 Stronach Ave East Maitland,
NSW 2323
DRAWING TITLE:
SITE PLAN

SCALE: REFER DRAWING TITLES
PROJECT NO. 19160
DATE: 04/09/2020
PROJECT STATUS: DEVELOPMENT APPLICATION
ORIGINAL PAPER SIZE: A1
PROJECT STATUS: DRAWING NO. ISSUE
DA A004 B





CLIENT:



fresh hope
care

FRESH HOPE CARE

RESPONSE TO COUNCIL RFI'S

icon
project management

Icon Project Management
10400 KENT STREET, SUITE 301W, 2000

DRIVEWAY RELOCATED	01	4/9/20
DRAWING REVISIONS	REV	DATE

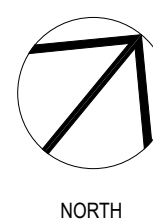
4/9/20	RESPONSE TO COUNCIL REFS	B	CFA	LC
16/6/20	ISSUE FOR DEVELOPMENT APPLICATION	A	PJ	LC
DATE	DESCRIPTION	ISSUE	DRAWN	APPD

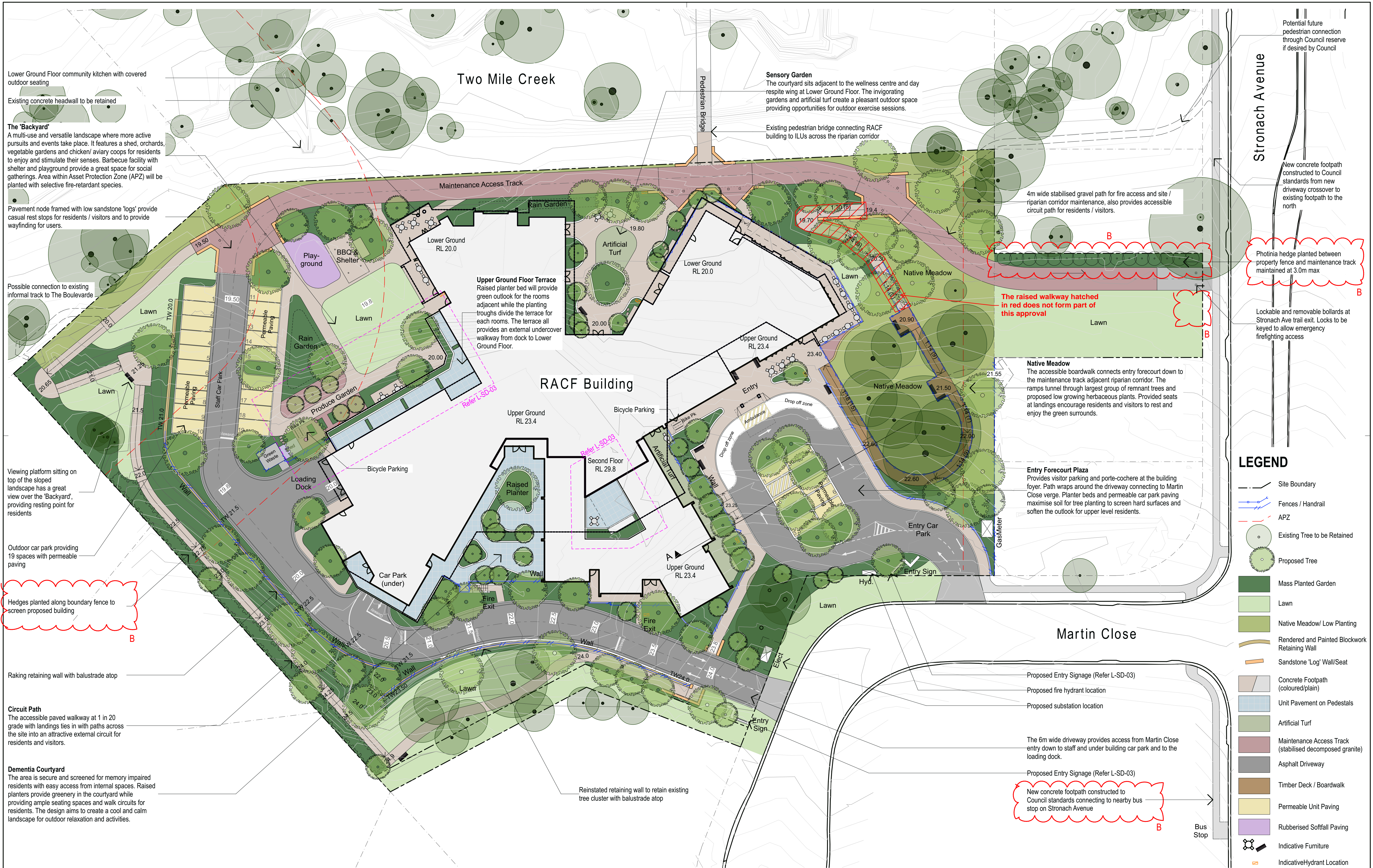
GENERAL NOTES:

- DO NOT SCALE FROM DRAWINGS. USE FIGURED DIMENSIONS ONLY.
- ANY DISCREPANCIES IN DOCUMENTATION-CONTACT THE ARCHITECT FOR CLARIFICATION.
- CALDER FLOWER ARCHITECTS ARE NOT LIABLE FOR ANY LOSS-DAMAGE-CLAIM-COST DEMAND AS A RESULT OF THE USE OR RECEIPT OF DRAWINGS ISSUED IN DWG FORMAT.
- THIS DRAWING IS NOT AN APPROVED CC DRAWING.
- PRIOR TO USE FOR BUILDING CONSTRUCTION THE BUILDER MUST ENSURE THEY ARE IN POSSESSION OF A CC AND ALL OTHER REQUIRED COUNCIL APPROVALS

PROJECT:
FHC MAITLAND
7 Martin Close & 42 Stronach Ave East Maitland,
NSW 2323
DRAWING TITLE:
GROUND FLOOR PLAN

SCALE:	REFER DRAWING TITLES	
PROJECT NO.	19160	
DATE:	04/09/2020	
PROJECT STATUS	DEVELOPMENT APPLICATION	
ORIGINAL PAPER SIZE:	A1	
PROJECT STATUS	DRAWING NO.	ISSUE
DA	A101	B





ARTERRA DESIGN PTY LTD ABN 40 069 552 610
SUITE 602 / 51 RAWSON STREET, EPPING, NSW 2121
P 02 9957 2466 F 02 9957 3977 W ARTERRA.COM.AU

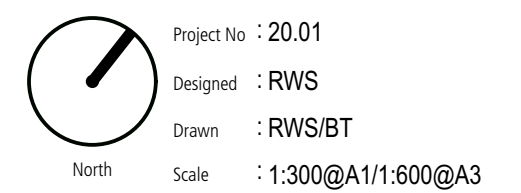


B	Response to Request for Additional Information - hedging added to south bndry of 44 Stronach Ave - footpath added to Stronach Ave & Martin Close - Stronach Ave entry sign removed	RWS	04/09/20
A	For Development Application	RWS	12/06/20
REVISION	DESCRIPTION	CHKD	DATE

PROJECT & CLIENT
Residential Aged Care Facility

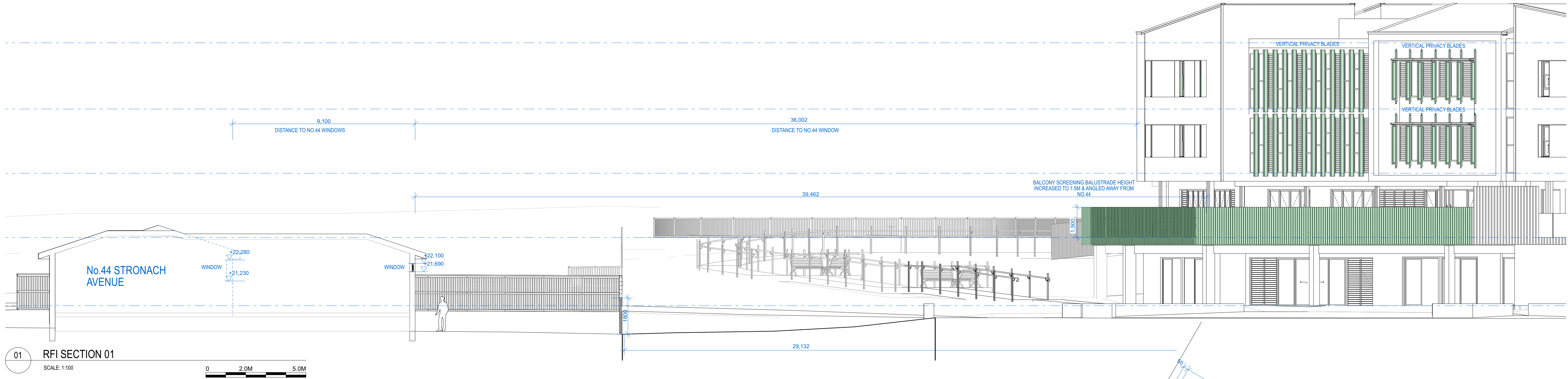
Fresh Hope Care

DRAWING TITLE
Overall Landscape Plan

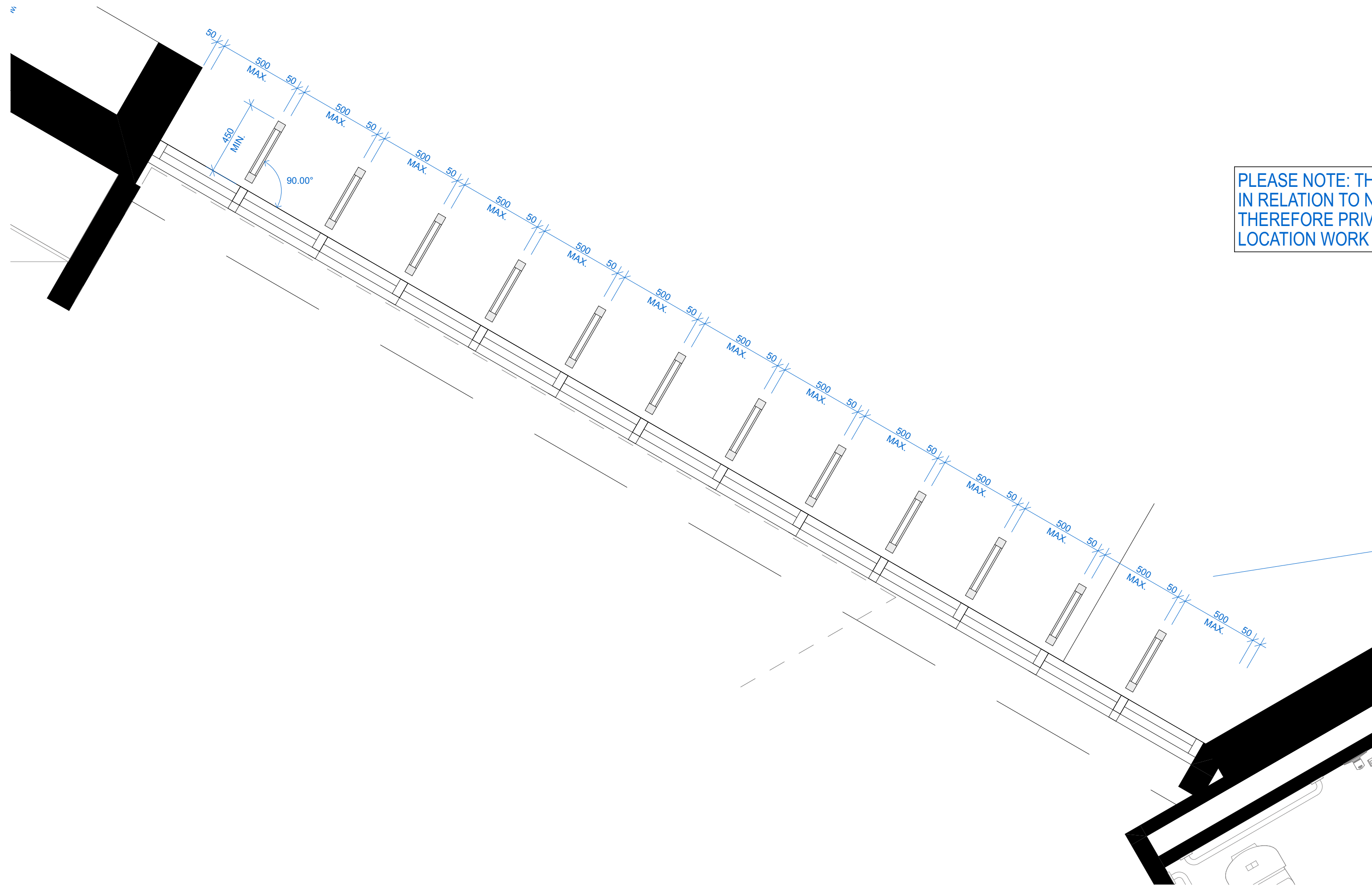


DRAWING NUMBER
L-SD-02

REVISION
B

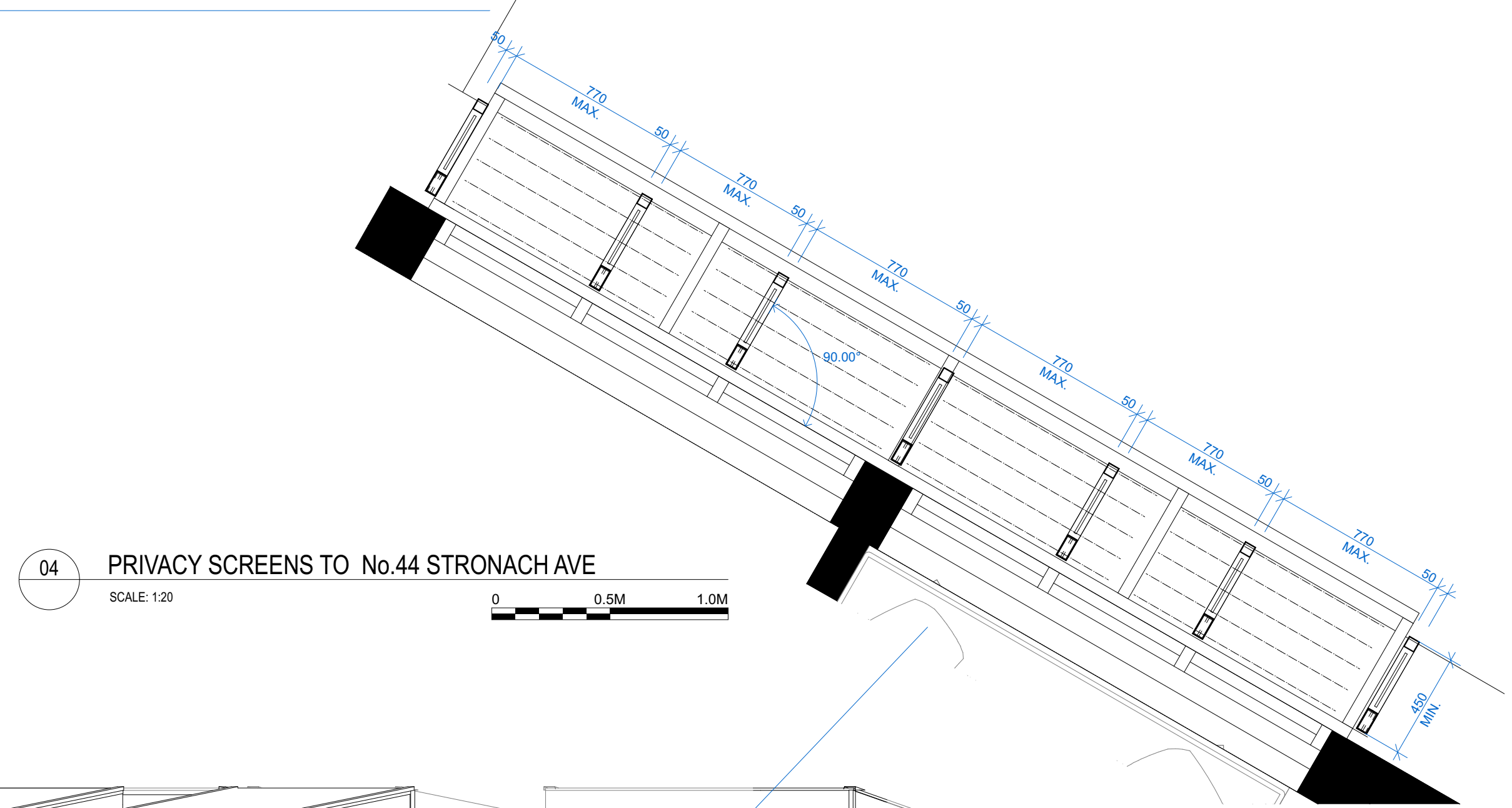


01 RFI SECTION 01
SCALE: 1:100

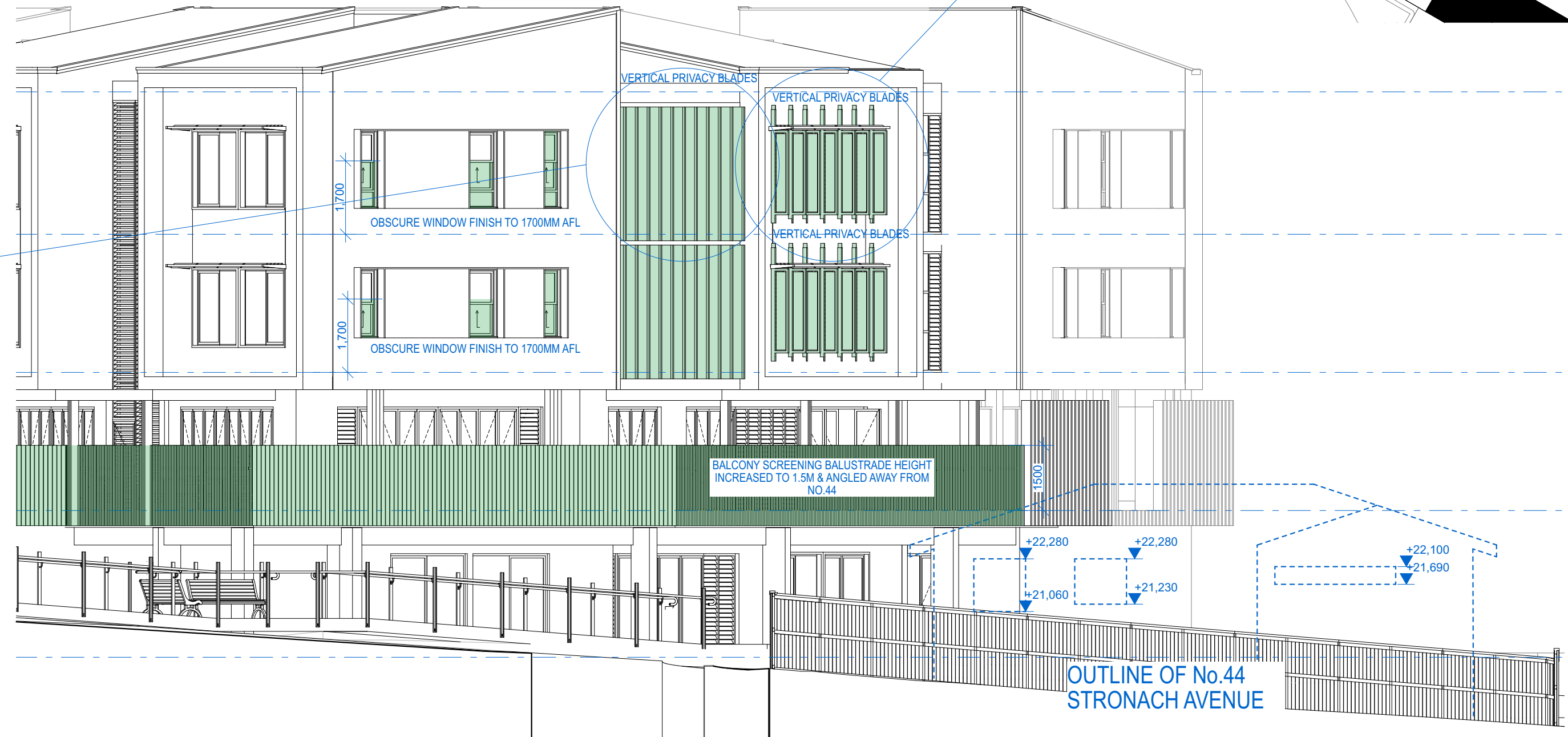


03 PRIVACY SCREENS TO No.44 STRONACH AVE
SCALE: 1:20

PLEASE NOTE: THE RAC BUILDING IS ANGLED IN RELATION TO NO.44 STRONACH AVENUE, THEREFORE PRIVACY SCREENS IN THIS LOCATION WORK BEST AT 90 DEGREES.



04 PRIVACY SCREENS TO No.44 STRONACH AVE
SCALE: 1:20



02 RFI SECTION 02
SCALE: 1:100

DRIVEWAY RELOCATED	01	11/2/20
DRAWING REVISIONS	REV	DATE

11/2/20	ADDITIONAL INFORMATION FOR JRP	E	CFA	CFA
DATE	DESCRIPTION	ISSUED	DRAWN	APPROVED

GENERAL NOTES:
• DO NOT SCALE FROM DRAWINGS. USE FIGURED DIMENSIONS ONLY.
• ANY DISCREPANCIES IN DOCUMENTATION-CONTACT THE ARCHITECT FOR CLARIFICATION.
• CALDER FLOWER ARCHITECTS ARE NOT LIABLE FOR ANY LOSS-DAMAGE-CLAIM-COST DEMAND AS A RESULT OF THE USE OR RECEIPT OF DRAWINGS ISSUED IN DWG FORMAT.
• THIS DRAWING IS NOT AN APPROVED CC DRAWING.
• PRIOR TO USE FOR BUILDING CONSTRUCTION THE BUILDER MUST ENSURE THEY ARE IN POSSESSION OF A CC AND ALL OTHER REQUIRED COUNCIL APPROVALS

PROJECT:
FHC MAITLAND
7 Martin Close & 42 Stronach Ave East Maitland,
NSW 2323
DRAWING TITLE:
PRIVACY ANALYSIS No. 44 STRONACH AVE

